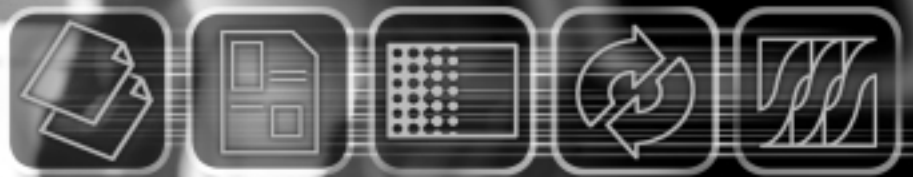


Aficio®
2035/2045

Drive Office Productivity ...
to New Heights



COPY
PRINT
SCAN
FAX
MANAGE

RICOH®

Your next-generation total office solution.

2035/2045

With the new Ricoh Aficio 2035/2045, these systems are greater than the sum of their parts. More than just multifunction devices,

the Aficio 2035/2045 are the cornerstones of any successful office operation for document production and distribution. Built on Ricoh's world-class Aficio platform, these next-generation multifunction solutions are complete digital communication hubs.

Featuring superior **600 dpi image quality at 35/45 pages-per-minute**, the Aficio 2035/2045 offer unmatched versatility in a compact design. And when it comes to finishing, choose from **three finishing options** to meet your specific needs for multi-position stapling, hole punching, even saddle-stitch booklet finishing.

Connecting the Aficio 2035/2045 to your network enables you to get the most from your investment. As a printer, users have complete access to all imaging and document finishing on the Aficio 2035/2045.

Looking for faster and more cost-effective ways to distribute paper-based documents? By using the scanning capability of the Aficio 2035/2045, digitize your paper documents for electronic distribution.

Add the Fax option to create the ultimate communication hub. The Aficio 2035/2045 can be configured with up to three G3 lines for simultaneous fax transmission and reception.

Streamline workflow. Reduce costs. Speed information distribution. Manage system status remotely. Do it all at one device and drive your office productivity to new heights with the Ricoh Aficio 2035/2045.

Your on-ramp to the information superhighway.



COPYING



FAXING



PRINTING



DOCUMENT
MANAGEMENT



NETWORK
SCANNING



In any configuration, the Aficio 2035/2045 bring powerful copying capabilities to your office, including:

- 64 MB RAM standard (expandable to 320 MB) for Scan Once Print Many operation.
- Intuitive control panel design for fast and easy job programming—even for novice users.
- Customizable shortcut keys to reduce programming of common modes to one-touch operation.
- A host of labor-saving features like Automatic Paper Selection and Tray Switching, Automatic Exposure, Automatic Zoom, and Duplexing for up to 999 sets to take the guesswork out of copying.
- Stamping and Numbering features to add digital data to copy sets.
- An 80-sheet ARDF to efficiently process one- or two-sided originals up to 11" x 17".

**The Aficio 2035/2045
provide workgroups
with a complete digital
copying system with
full document finishing.**



Dual 500-sheet paper trays and a 50-sheet bypass tray provide 1,050 sheets of standard paper capacity. The Aficio 2035/2045 deliver greater media flexibility through:

- User adjustable paper trays that handle stocks ranging in size from 5.5" x 8.5" to 11" x 17".
- Increase the paper capacity with either the Paper Bank PS530 for two additional user-adjustable 500-sheet trays or the Large Capacity Tray with 1,500-sheet capacity. Or combine both options for a total paper supply of 3,550 sheets.
- Standard Automatic Duplexing.

◀ **Versatile 6-way paper supply:** Keep up to 3,550 sheets on-line at all times to handle the varying copy jobs performed by users throughout the business day.

When it's time to finish the job, Ricoh offers a broad spectrum of output options to meet your needs and budget:

- Separate copies from printed or faxed pages with the One-bin Tray.
- Add offset stacking and 50-sheet one-position stapling with the 1,000-sheet Finisher.
- The Multi-tray Finisher brings multi-position stapling and optional hole-punching to every user.
- Install the Booklet Finisher to provide capabilities once reserved to commercial printers. Lower expenses, speed job completion, and maintain confidentiality by doing it all in-house—even saddle-stitched, folded booklets—for the ultimate professional touch.

Complete in-house document production: ▶

Choose one of three finishers to stack, staple, and punch output sets; even create professional saddle-stitched and folded booklets up to 60 pages.

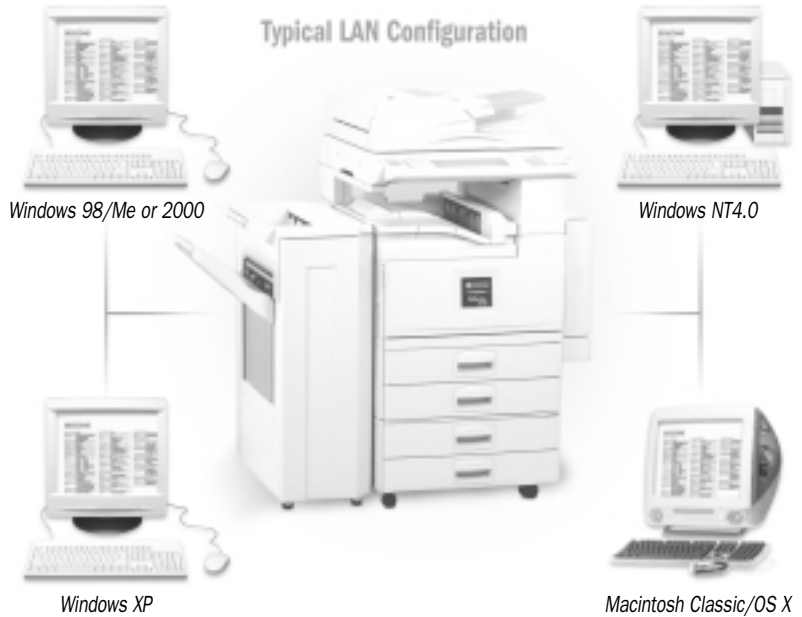


COPYING

2035 2045

PRINTING
PRINTING

Increase the functionality of the Aficio 2035/2045 exponentially for an incremental cost.



▲ Intuitive drivers make printing easy:
Graphic drivers supporting PCL 5e/6 emulation, Adobe PostScript 3, and Ricoh's RPCS put total control at connected users' fingertips.

As a networked printer, every connected user has remote access to all paper supplies and full finishing capabilities. Now, the workgroup user can:

- Print every page with true 600 x 600 dpi resolution—every set is a digital original.
- Duplex print your documents at the same level of output performance as simplex printing.
- Print in their choice of genuine Adobe PostScript 3, PCL 5e/6, or...
- Make printing even easier with Ricoh's Refined Print Command Stream (RPCS), an icon-based page description language and driver that simplifies printing set-up.

The print controller is configured with a 300 MHz CPU, 192 MB RAM, and a 20 GB hard disk drive to drive the Aficio 2035/2045 at the maximum speed and accept jobs from multiple workstations on the network without delay. Connecting to your network is easy with your choice of:

- Standard 10/100 BaseT Ethernet interface for network-wide printing.
- Standard IEEE 1284 Parallel interface for 1:1 printing.
- Optional USB 2.0 and IEEE 1394 interfaces for high-speed data transfer using the latest networking technologies.
- Support for the IEEE 802.11b and Bluetooth wireless connectivity to free users from cables and offer the flexibility to print from virtually anywhere in the office.

Flexible connectivity: ▶
Unmatched flexibility to connect to your network.



What's more, connected users can manage print jobs and the entire system right from the desktop. All you need is the printer's IP address and Ricoh's SmartNetMonitor software installed on a networked PC to monitor and manage the Aficio 2035/2045.

Real-time access to real-time information: Ricoh's SmartNetMonitor utility constantly ▶ informs users as to the system status and system capabilities right from your desktop.

Address	Model Name	Status	Printer Status	Color Status	Page Status	System Status
172.16.31.22	Aficio 2045	Aficio 2045	Ready	Ready	Ready	Ready
172.16.31.23	Aficio 2045	Aficio 2045	Ready	Ready	Ready	Ready
172.16.31.24	Aficio 2045	Aficio 2045	Ready	Ready	Ready	Ready
172.16.31.25	Aficio 2045	Aficio 2045	Ready	Ready	Ready	Ready
172.16.31.26	Aficio 2045	Aficio 2045	Ready	Ready	Ready	Ready
172.16.31.27	Aficio 2045	Aficio 2045	Ready	Ready	Ready	Ready
172.16.31.28	Aficio 2045	Aficio 2045	Ready	Ready	Ready	Ready
172.16.31.29	Aficio 2045	Aficio 2045	Ready	Ready	Ready	Ready
172.16.31.30	Aficio 2045	Aficio 2045	Ready	Ready	Ready	Ready
172.16.31.31	Aficio 2045	Aficio 2045	Ready	Ready	Ready	Ready
172.16.31.32	Aficio 2045	Aficio 2045	Ready	Ready	Ready	Ready
172.16.31.33	Aficio 2045	Aficio 2045	Ready	Ready	Ready	Ready
172.16.31.34	Aficio 2045	Aficio 2045	Ready	Ready	Ready	Ready
172.16.31.35	Aficio 2045	Aficio 2045	Ready	Ready	Ready	Ready
172.16.31.36	Aficio 2045	Aficio 2045	Ready	Ready	Ready	Ready
172.16.31.37	Aficio 2045	Aficio 2045	Ready	Ready	Ready	Ready
172.16.31.38	Aficio 2045	Aficio 2045	Ready	Ready	Ready	Ready
172.16.31.39	Aficio 2045	Aficio 2045	Ready	Ready	Ready	Ready
172.16.31.40	Aficio 2045	Aficio 2045	Ready	Ready	Ready	Ready
172.16.31.41	Aficio 2045	Aficio 2045	Ready	Ready	Ready	Ready
172.16.31.42	Aficio 2045	Aficio 2045	Ready	Ready	Ready	Ready
172.16.31.43	Aficio 2045	Aficio 2045	Ready	Ready	Ready	Ready
172.16.31.44	Aficio 2045	Aficio 2045	Ready	Ready	Ready	Ready
172.16.31.45	Aficio 2045	Aficio 2045	Ready	Ready	Ready	Ready
172.16.31.46	Aficio 2045	Aficio 2045	Ready	Ready	Ready	Ready
172.16.31.47	Aficio 2045	Aficio 2045	Ready	Ready	Ready	Ready
172.16.31.48	Aficio 2045	Aficio 2045	Ready	Ready	Ready	Ready
172.16.31.49	Aficio 2045	Aficio 2045	Ready	Ready	Ready	Ready
172.16.31.50	Aficio 2045	Aficio 2045	Ready	Ready	Ready	Ready



Use the 600 dpi scanner of the Aficio 2035/2045 to capture, send, and/or store hardcopy originals right at the device.

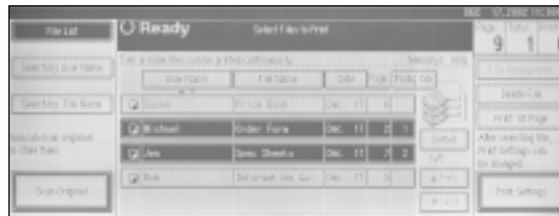
Documents can be scanned and distributed with three easy steps.

Server-less Scanning

Paper documents are efficiently scanned at speeds up to 49 pages per minute at 200 dpi. Once captured, images are temporarily stored in the system's standard 20 GB Document Server, and then sent directly to programmed destinations. This innovative server-less model eliminates the need to dedicate a PC to act as a server for scanned images while saving space, money, and allowing you to allocate computer resources elsewhere within your organization.

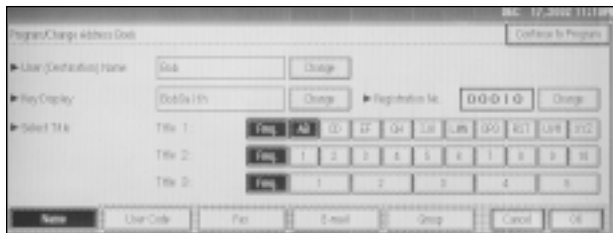
- Execute pull scanning tasks with a TWAIN-compliant driver installed on a user's PC.
- Ricoh's ScanRouter Lite utility delivers ad-hoc Scan to E-mail capabilities—at no additional cost.
- Every user has complete control over scan settings such as resolution, original size and type, image density, and destination(s) for every job.
- Support for a wide selection of industry standard file formats including TIFF, TIFF-F, Multi-page TIFF, PDF, and JPEG ensures digitized documents can always be opened and read by recipients.

Document archival and retrieval: Leverage the power of the 20 GB Document Server to act as an on-site virtual document library. ▼



Once scanned, documents can be stored in the system's standard 20 GB Document Server for archival or later print-on-demand purposes.

- Conduct quick searches by file or user name, and then print or download them to the desktop using Ricoh's Web Image Monitor.
- View thumbnails of stored images for easy identification.



▲ **Send digital files instantly and at no cost:** Send E-mails to up to 500 recipients at network speed. Enter a subject up to 20 characters using the QWERTY keyboard that appears on the LCD panel.

Programming E-mail addresses is accomplished directly at the control panel. The 20 GB Document Server offers an Address Book that stores up to 2,000 E-mail addresses right at the system.

- Address Book maintenance is performed either at the control panel or via SmartNetMonitor or Web Image Monitor utilities.
- Add new individual or group E-mail addresses, edit or delete existing addresses, export data stored on the Document Server for back-up purposes, or duplicate address book data to populate other machines without rekeying.



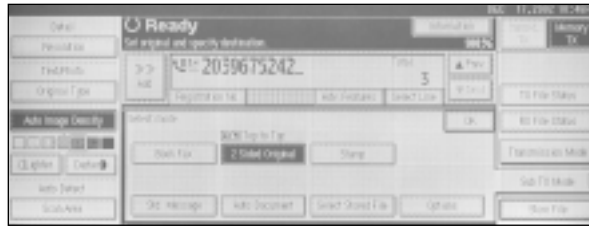
NETWORK SCANNING

2035 2045

FAXING
FAXING



Add the Type 2045 Fax Option to the Aficio 2035/2045 to increase versatility and value.



▲ **Maximum 2,000 Quick Dial Numbers:** The Type 2045 Fax Option offers a standard complement of 500 Quick Dial locations with a maximum of 2,000.

The Type 2045 Fax Option has all of the standard fax features and more for simple operation, convenience, and productivity.

- Scan one- or two-sided multi-page originals as large as 11" x 17" through the ARDF.
- Increase your fax capabilities with multiple Super G3 fax lines at your disposal for simultaneous transmission and reception.
- Install Ricoh's JBIG Transmission Option, featuring an ITU-approved compression scheme that crunches file sizes to their absolute minimums, and reduce transmission times to 2 seconds per page.



▲ **20 GB Document Server:** Stores digital files for just a few hours or indefinitely, using the hard disk drive to serve as a long-term document repository.

Easily search and retrieve a specific document to re-print, re-fax, re-send or download to your computer to for editing from the document server.

- Store up to 3,000 documents or up to 9,000 pages on the Document Server.
- Print, edit, or delete archived documents at your convenience with complete access to all copier/printer functions, such as duplexing and finishing.
- Search and retrieve documents at the control panel, or by launching Ricoh's Web Image Monitor software using a standard Web browser at a connected PC.



MANAGEMENT
DOCUMENT MANAGEMENT

THE AFICIO 2035/2045

Engine/Copier Specifications

Configuration:	Console	
Scanning Element:	Flatbed with Moving CCD Array Image Sensor	
Printing Process:	Twin Laser Beam Scanning & Electrophotographic printing	
Toner:	Dry, Dual Component	
System Memory (Std./Max.):	64/320 MB RAM	
Hard Disk Drive	20 GB	
Copy Resolution:	600 x 600 dpi	
Grayscale:	256 levels	
Exposure Adjustment:	Manual & Automatic	
Quantity Indicator:	1 to 999	
Original Type:	Book/Sheet	
Maximum Original Size:	Up to 11" x 17"	
Copy Size:	5.5" x 8.5" to 11" x 17"	
Copy Type:	Plain Paper, Transparencies	
Warm-up Time:	Aficio 2035:	15 seconds
	Aficio 2045:	20 seconds
First Copy Speed:	Aficio 2035:	4.5 seconds
	Aficio 2045:	3.6 seconds
Continuous Copying Speed:	Aficio 2035:	35 copies/minute (LTR)
	Aficio 2045:	45 copies/minute (LTR)
Recovery Time (from Auto Off):	Aficio 2035:	10 seconds
	Aficio 2045:	15 seconds
Power Source:	120V/60Hz/15A	
Dimensions (WxDxH):	23.6" x 25.6" x 28.3" (760 x 650 x 870mm)	
Weight:	200 lb. (91.0kg) w/ARDF	
Standard Paper Capacity:	500 sheets x 2 trays 50-sheet Bypass tray	
Optional Paper Capacity:	500 sheets x 2 trays 1,500-sheet Large Capacity Tray (LCT)	
Paper Size:	5.5" x 8.5" to 11" x 17"/A6 to A3	
Paper Weight:	20 to 28 lb. Bond/60 to 105g/m ² (Trays 1, 2) 16 to 44 lb. Bond/55 to 163g/m ² (Bypass) 20 to 28 lb. Bond/60 to 105g/m ² (Duplex)	
Reduction Ratios:	25%, 50%, 65%, 73%, 78%, 85%, 93%	
Enlargement Ratios:	121%, 129%, 155%, 200%, 400%	
Zoom:	25% to 400% in 1% increments	

Printer Specifications

Print Speed:	Aficio 2035:	35 ppm
	Aficio 2045:	45 ppm
CPU:	RM7065A 300 MHz	
Standard Interfaces:	10/100 Base TX IEEE 1284 Parallel	
Optional Interfaces:	IEEE 802.11b Wireless LAN Bluetooth IEEE 1394 USB 2.0	
Network Protocol:	TCP/IP, IPX/SPX, SMB, AppleTalk	
Utilities:	SmartNetMonitor	
Page Description Languages:	PCL 5e/6 emulation Ricoh RPCS Adobe PostScript 3 (optional)	
Print Resolution:	PCL 5e/6:	300 dpi, 600 dpi
	PS3:	300 dpi, 600 dpi
	RPCS:	200 dpi, 300 dpi, 600 dpi
Grayscale:	256 Levels	
Fonts for PCL 5e/6:	35 Intellifonts, 10 TrueType Fonts, 1 Bitmap	
Fonts for PS3:	136 PostScript Fonts	
Drivers for PCL 5e/6, RPCS:	Windows 9x, Me, NT4.0, 2000	
Drivers for PS3:	Windows 9x, Me, NT4.0, 2000, Macintosh 8.6 - OS X	

Scanner Specifications

Scanning Speed:	ScanRouter:	49 ipm (@ 200 dpi)
	TWAIN Driver:	36 ipm (@ 200 dpi)
Scanning Resolution:	600 dpi	
Grayscale:	256 Levels	
Scan Area:	11" x 17"	
Interface:	10/100 BaseTX IEEE 1394 (optional) IEEE 802.11b Wireless LAN (optional)	
Protocol:	TCP/IP	
Memory Capacity:	320 MB	
Software Driver:	ScanRouter	

Fax Specifications (EDP 411347)

Circuit:	PSTN, PBX	
Number of Lines:	One Maximum of three with options	
Compatibility:	ITU-T (ITU) G3	
Resolution:	200 x 200/100 dpi 400 x 400 dpi (Optional)	
Compression Method:	MH, MR, MMR JBIG (Optional)	
Scanning Speed:	0.30 seconds (LEF)	
Modem Speed:	33.6 Kbps with Auto Fallback	
Transmission Speed:	G3: 3.0 seconds per page (without JBIG) G3: 2.0 seconds per page (with JBIG)	
Memory:	4 MB standard, 28 MB maximum	
Memory Backup:	1 hour	
Quick Dials:	500	
Speed Dials:	100 (up to 1,200 or 2,000 with optional memory)	
Group Dials:	100 (max. 500 numbers per group)	
ID Code Programming:	8 digits	
User Function Key:	4 keys	
Auto Document:	6 documents (18 documents with optional memory)	
User Codes:	100 (500 with optional memory)	

PS530 Paper Bank (EDP 411336)

Paper Size:	5.5" x 8.5" to 11" x 17"/A5 to A3	
Paper Weight:	20 to 28 lb. Bond/60 to 105g/m ²	
Paper Capacity:	2 x 500-sheets	

Large Capacity Tray LCT RT45 (EDP 411339)

Paper Size:	8.5" x 11"/A4	
Paper Weight:	20 to 28 lb. Bond/60 to 105g/m ²	
Paper Capacity:	1,500-sheets	

One Bin Tray PT330 (EDP 411342)

Paper Size:	5.5" x 8.5" to 11" x 17"/A5 to A3	
Paper Weight:	16 to 28 lb. Bond/55 to 105g/m ²	
Paper Capacity:	125 sheets	

SR790 Finisher 1000 (EDP 410972)

Paper Size:	5.5" x 8.5" to 11" x 17"/A6 to A3	
Paper Weight:	16 to 42 lb. Bond/55 to 157g/m ²	
Stack Capacity:	Proof Tray:	250 sheets
	Shift Tray:	1,000 sheets (8.5" x 11" or smaller) 500 sheets (8.5" x 14" or larger)
Staple Capacity:	50 sheets	(8.5" x 11" or smaller)
	30 sheets	(8.5" x 14" or larger)
Staple Position:	3 positions (1 staple/2 positions; 2 staples/1 position)	

SR880 Multi-Tray Finisher (EDP 411563)

Paper Size:	5.5" x 8.5" to 11" x 17"/A6 to A3	
Paper Weight:	14 to 43 lb. Bond/52 to 163g/m ²	
Stack Capacity:	Upper Tray:	500 sheets
	Lower Tray:	2,000 sheets
Staple Capacity:	50 sheets	(8.5" x 11" or smaller)
	30 sheets	(8.5" x 14" or larger)
Staple Position:	4 positions (1 staple/3 positions; 2 staples/1 position)	

SR890 Booklet Finisher (EDP 411334)

Paper Size:	5.5" x 8.5" to 11" x 17"/A5 to A3	
Paper Weight:	14 to 43 lb. Bond/52 to 163g/m ²	
Stack Capacity:	Upper Tray:	150 sheets
	Lower Tray:	1,000 sheets
Staple Capacity:	50 sheets	(8.5" x 11" or smaller)
	30 sheets	(8.5" x 14" or larger)
Booklet Tray Capacity:	10 sets (11 to 15 sheets) 15 sets (6 to 10 sheets) 25 sets (less than 5 sheets)	
Booklet Staple Capacity:	15 sheets	
Booklet Staple Position:	4 positions (1 staple/2 positions; 2 staples/2 positions)	

2/3 Hole Punch Kit (EDP 410785)

Paper Weight:	14 to 43 lb. Bond/52 to 163g/m ²	
Application:	For SR880 Multi-Tray Finisher only	

Type 2045 S/P Kit (EDP 411486)

Adobe PostScript 3 (EDP 411376)

IEEE 1394 Interface Board Type 4510 (EDP 400745)

Included Cables:	2.0m 6-pin to 6-pin cable 2.0m 6-pin to 4-pin cable	
Hardware Specifications:	6 pins; 2 ports available	
Data Transmissions Speeds:	400/200/100 Mbps	
System Requirements:	Windows Professional/Server with Service Pack 1; Windows XP for IP over IEEE 1394 (TCP/IP protocol)	

USB 2.0 Interface Board Type A (EDP 411237)

Data Transmissions Speeds:	480 Mbps (USB 2.0) 12 Mbps (Full speed mode)	
Supported OS:	USB 1.1: Windows 98SE/2000/Me/XP, Mac OS 9.x/X classic mode USB 2.0: Windows XP/2000	

IEEE 802.11b Wireless LAN Interface (EDP 405412)

Data Transmissions Speeds:	1/2/5.5/11 Mbps	
Protocol:	TCP/IP, IPX/SPX, SMB, AppleTalk	
Connection Types:	Ad Hoc mode Infrastructure mode	
Distance Between Devices:	151 to 1,300 feet (140 to 400 meters)	

Bluetooth Interface Type 2045 (EDP 411377)

Data Transmissions Speeds:	1 Mbps	
Supported OS:	Windows XP/2000/98SE/Me (dependent on Bluetooth Card)	
Distance Between Devices:	33 feet (10 meters)	

Aficio 2035 (EDP 411482)

Aficio 2045 (EDP 411483)




Aficio 2035 S/P (EDP 411484)

Aficio 2045 S/P (EDP 411485)

Print speed may be affected by network, application or PC performance. Specifications and external appearances are subject to change without notice. Products are shown with optional features. For maximum performance and yield, we recommend using genuine Ricoh parts and supplies.

2035/2045 SPECIFICATIONS

Configured to Meet Your Needs ...

2035/2045 with 1,000-Sheet Finisher	2035/2045 with Multi-Tray Finisher	2035/2045 with Booklet Finisher
 <p>Standard Components</p> <ul style="list-style-type: none"> ■ ARDF ■ Auto-Duplexing ■ 50-Sheet Bypass Tray ■ 2 x 500-Sheet Trays ■ 500-Sheet Output Tray ■ 64 MB RAM ■ 20 GB HDD <p>Optional Components</p> <ul style="list-style-type: none"> ■ 2 x 500-Sheet Tray ■ One-Bin Tray ■ Bridge Unit ■ SR790 1,000-Sheet Finisher 	 <p>Standard Components</p> <ul style="list-style-type: none"> ■ ARDF ■ Auto-Duplexing ■ 50-Sheet Bypass Tray ■ 2 x 500-Sheet Trays ■ 500-Sheet Output Tray ■ 64 MB RAM ■ 20 GB HDD <p>Optional Components</p> <ul style="list-style-type: none"> ■ 2 x 500-Sheet Tray ■ 1,500-Sheet LCT ■ Bridge Unit ■ SR880 Multi-Tray Finisher 	 <p>Standard Components</p> <ul style="list-style-type: none"> ■ ARDF ■ Auto-Duplexing ■ 50-Sheet Bypass Tray ■ 2 x 500-Sheet Trays ■ 500-Sheet Output Tray ■ 64 MB RAM ■ 20 GB HDD <p>Optional Components</p> <ul style="list-style-type: none"> ■ 2 x 500-Sheet Tray ■ 1,500-Sheet LCT ■ One-Bin Tray ■ Bridge Unit ■ SR890 Booklet Finisher

S/P Configuration Includes

- | | | |
|----------------------|-----------------|-----------------------|
| ■ 192 MB RAM | ■ Ricoh RPCS | ■ Parallel Port |
| ■ PCL 5e/6 emulation | ■ 10/100 Base T | ■ ScanRouter Lite |
| | | ■ DeskTop Binder Lite |

Available Options Not Shown

- | | | |
|--------------------------------|---------------------------------------|--------------|
| ■ Adobe PostScript 3 | ■ IEEE 1394 Interface | ■ Fax Option |
| ■ USB 2.0 Interface | ■ Bluetooth Interface | |
| ■ 2/3 Hole Punch Kit for SR880 | ■ IEEE 802.11b Wireless LAN Interface | |

RICOH®

Image Communication

Ricoh Corporation, Five Dedrick Place, West Caldwell, NJ 07006
Phone: (973) 882-2000 • Web Site: <http://www.ricoh-usa.com>



EPA 2000 Office Products Partner of the Year (5th consecutive year)
EPA 2000 Labeling Partner of the Year

Ricoh Corporation has determined that this product meets the Energy Star® guidelines for energy efficiency.



Ricoh Company, Ltd. has been granted a certificate of ISO 14000, which is the International Standard for Quality Systems.



Adobe® PostScript® 3™



Designed for
Microsoft®
Windows® 2000
Professional
Windows® XP
Windows® 4.0
Windows® 98